

KEY:

Item	Quantity	Notes	Used	Spare
S4-50 @75w	18		18	3
S4-36 @75w	25		25	9
S4-26 @75w	5		5	4
S4-19 @75w	0		0	13
S4-36 Jr @75w	12		0	0
Alt: 360Q 4.5x6 @750w	0		0	0
Alt: 360Q 6x9 @750w	0		2	2
Alt: 360Q 6x12 @750w	18		2	2
Alt: 360Q 6x16 @750w	3		1	1
S4 PAR WFL @750w	36		0	0
S4 PAR MFL @750w	8		0	28
S4 PAR NSP @750w	0		0	36
S4 PAR VNSP @750w	0		0	36
PAR64 WFL @1000w	10		0	0
PAR64 Work Lt. @500w	2		0	0
3 Cell Sky Cyc @1000w	8		0	0

TYPICAL UNIT:



NOTES:

- 1) ALL SHOWS WILL BRING THEIR OWN COLOR & TEMPLATES.
- 2) ANY CHANGES MADE TO THE REPERTORY FLOT MUST BE RESTORED BEFORE LEAVING THE VENUE.

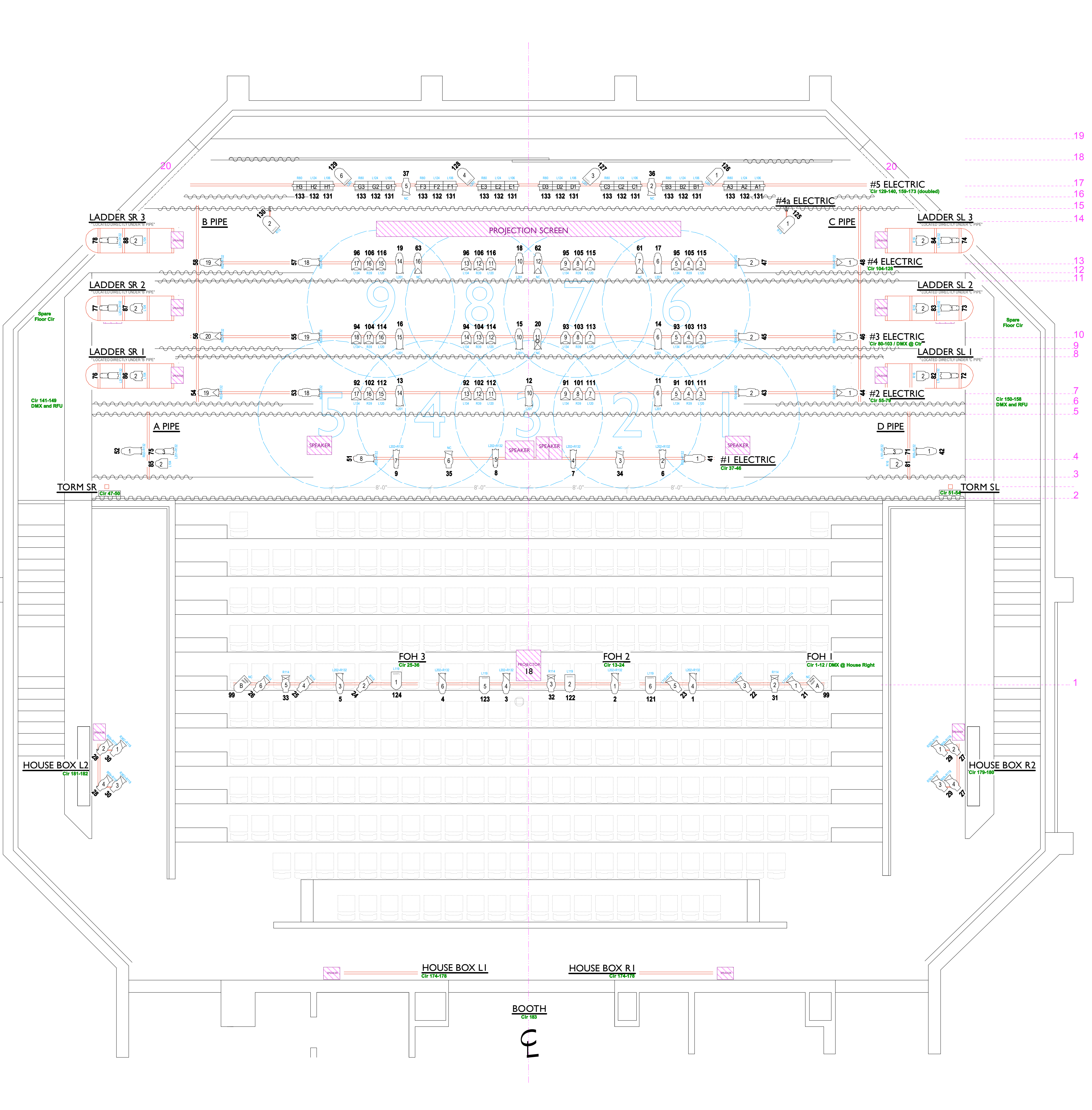
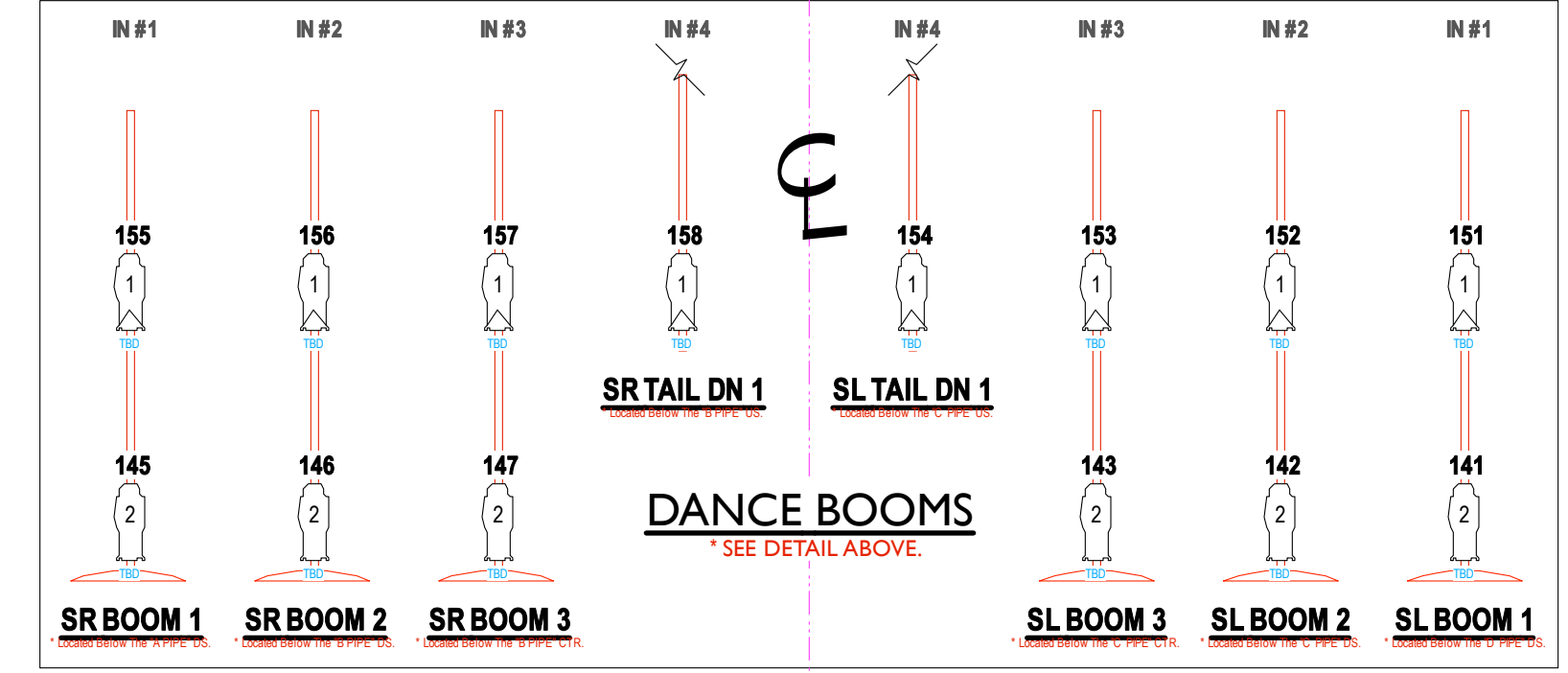
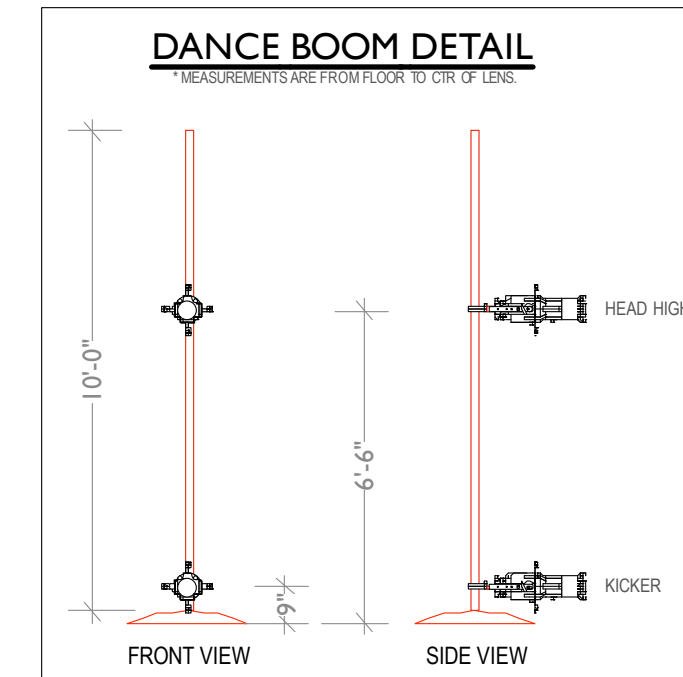
DRAWING TITLE:

REP PLOT 09

REVISED: 6.21.09 SCALE: 1/4"=1'-0"

PLATE NUMBER:

1 of 1



ITEM	DISTANCE FROM DOWNSTAGE CENTERLINE	BATTEN LENGTH	TRIM HEIGHT**	CURTAIN HEIGHT	CURTAIN WIDTH	CURTAIN FULLNESS	CURTAIN MATERIAL
1	FOH Electric	-15'-0"	3 @ 15'	12' 10"			
2	Teaser	+2"	71'	19' 4"			
3	Tormentor	+1'-11"	2 @ 18"	17' 6"	2 @ 17' 6"	2 @ 8'	24 Oz. Cherry Red Velour
4	1st Electric	+3'-4"	25'	18'			
5	1st Border	+7'-0"	71'	19' 4"	2 1/2'	60'	16 Oz. Black Velour
6	1st Legs	+7'-10"	2 @ 18"	17' 6"	2 @ 17' 6"	2 @ 15' 6"	16 Oz. Black Velour
7	2nd Border	+8'-8"	55'	17' 8"			
8	2nd Legs	+11'-8"	71'	19' 4"	2 1/2'	60'	16 Oz. Black Velour
9	2nd Border	+12'-4"	2 @ 18"	17' 6"	2 @ 17' 6"	2 @ 15' 6"	16 Oz. Black Velour
10	3rd Electric	+13'-3"	55'	17' 8"			
11	3rd Border	+17'-10"	71'	19' 4"	2 1/2'	60'	16 Oz. Black Velour
12	3rd Legs	+18'-6"	2 @ 18"	17' 6"	2 @ 17' 6"	2 @ 15' 6"	16 Oz. Black Velour
13	4th Electric	+19'-3"	55'	17' 8"			
14	Projection Screen	+22'-8 1/2"	24' 9"	19'			
15	4th Border	+23'-9"	62'	19' 4"	5' 6"	60'	16 Oz. Black Velour
16	4th Legs	+24'-8"	2 @ 11'	17' 6"	2 @ 17' 6"	2 @ 15' 6"	16 Oz. Black Velour
17	5th Electric	+25'-7"	55'	17' 8"			
18	Upstage Traveller	+27'-8"	52'	18' 6"	2 @ 17' 6"	2 @ 24' 6"	16 Oz. Black Velour
19	Cyclorama	+29'-5"	52'	17' 6"	17' 6"	48'	Seamless Muslin
20	Load Doors						

** - Trim Height is distance from finished floor to the bottom of the support pipe.